



Belmont Street, NW1
£4,250 p/w Furnished



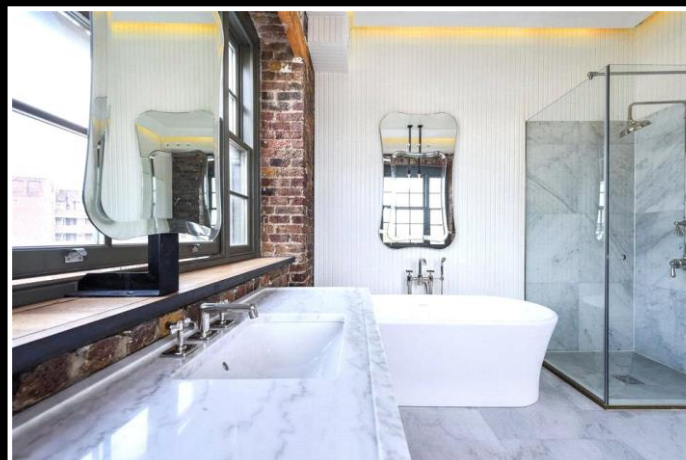
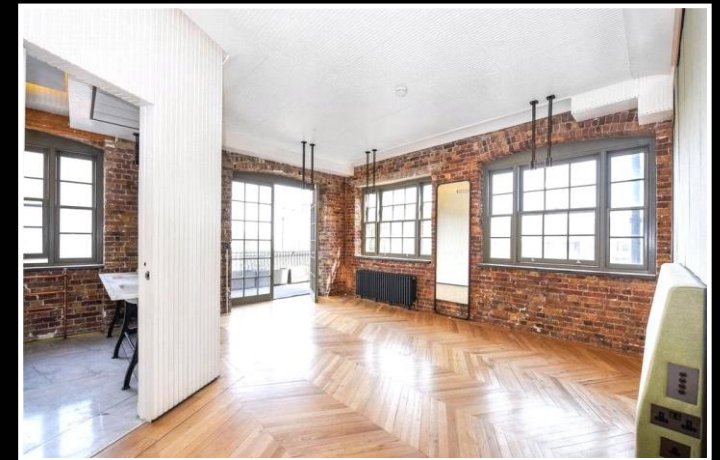
Belmont Street, NW1 £4,250 p/w Furnished

A rare opportunity to rent an extraordinary interior designed loft apartment situated on the fourth floor of a stunning converted piano factory in Camden NW1.

This loft style apartment has been interior designed to create a modern warehouse feel with astonishing results, benefiting from exceptional ceiling volumes and an incredibly high finish that is retained throughout. It comprises of an expansive living room that in itself is just shy of 90 sq meters, a remarkable open plan kitchen with state-of-the-art appliances. The superb principle bedroom suite with a walk-in dressing room/wardrobe and a designated terrace, a great sized second bedroom suite, a good sized third bedroom and a guest cloakroom. The property further benefits from the building's porter service, passenger lift, swimming pool and spa facilities.

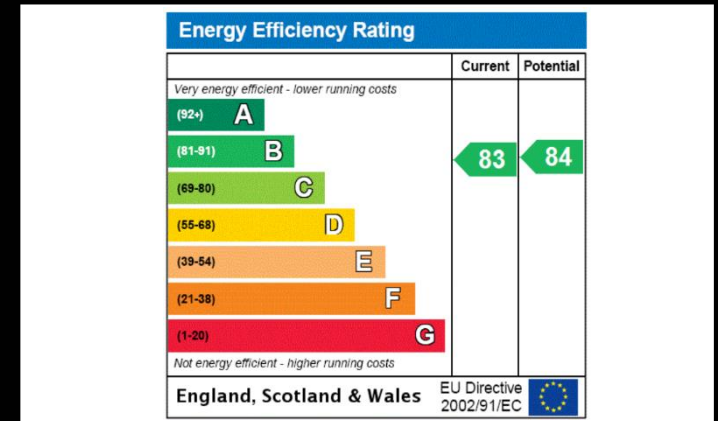
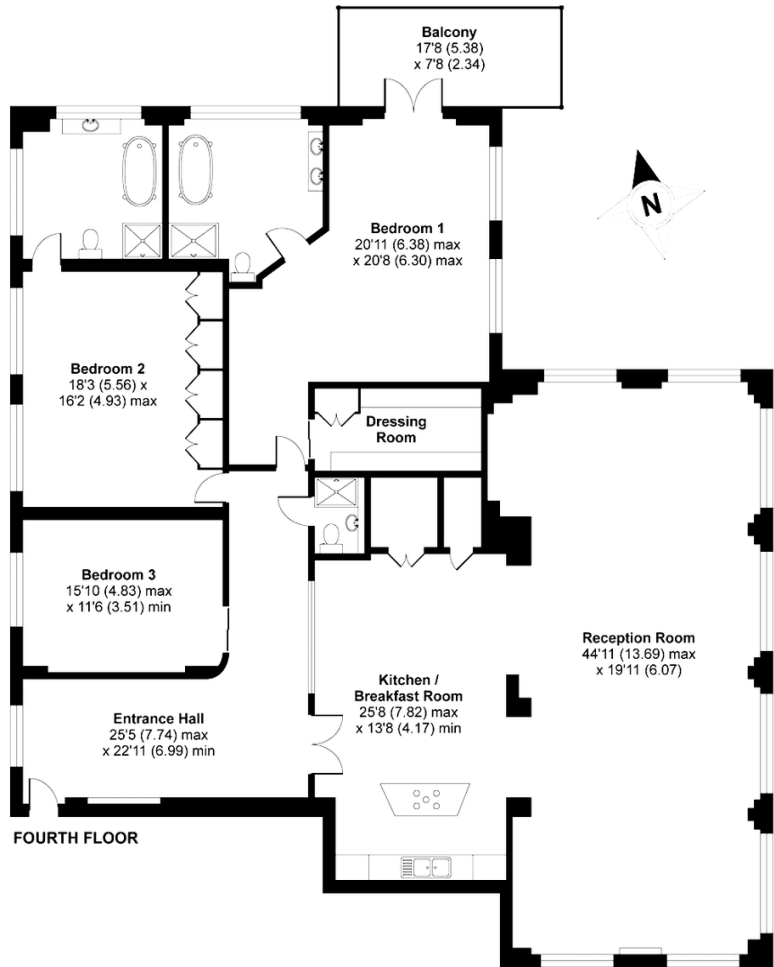
Chappell Lofts is positioned on Belmont Street which is a quiet residential street set back from the bustling Camden High Street which is virtually opposite the widely recognised and well known Round House venue. The extremely popular and quirky Camden Stables are again literally just down the road, they along with the parade of shops, restaurants, bars, and various amenities are on your doorstep. Camden Tube station is a short walk away which provides a simple commute across the capital.

Ref PCL220143



Belmont Street, London, NW1

APPROX. GROSS INTERNAL FLOOR AREA 3035 SQ FT 281.9 SQ METRES



For clarification, we wish to inform prospective tenants that we have prepared these lettings particulars as a general guide. We have not carried out a detailed survey, nor tested the services, appliances and specific fittings. Room sizes are approximate and rounded: they are taken between internal wall surfaces and therefore include cupboards/shelves, etc. Accordingly, they should not be relied upon for carpets and furnishings.